



University Life





Land & Labor Acknowledgement

We recognize and acknowledge that the University of Pennsylvania stands on the Indigenous territory known as “Lenapehoking,” the traditional homelands of the Lenape, also called Lenni-Lenape or Delaware Indians.

These are the people who, during the 1680s, negotiated with William Penn to facilitate the founding of the colony of Pennsylvania. Their descendants today include the Delaware Tribe and Delaware Nation of Oklahoma; the Nanticoke Lenni-Lenape, Ramapough Lenape, and Powhatan Renape of New Jersey; and the Munsee Delaware of Ontario.

We recognize and acknowledge the labor upon which our country, state, and institution are built. We remember that our country was built on the labor of enslaved people who were kidnapped and brought to the US from the African continent and recognize the continued contribution of their survivors.

We also acknowledge all immigrant and indigenous labor, including voluntary, involuntary, trafficked, forced, and undocumented peoples who contributed to the building of the country and continue to serve within our labor force.

University Life Departments

Creating the Student Experience Outside the Classroom



University Life Organizational Chart





175

University Life
Team Members

681

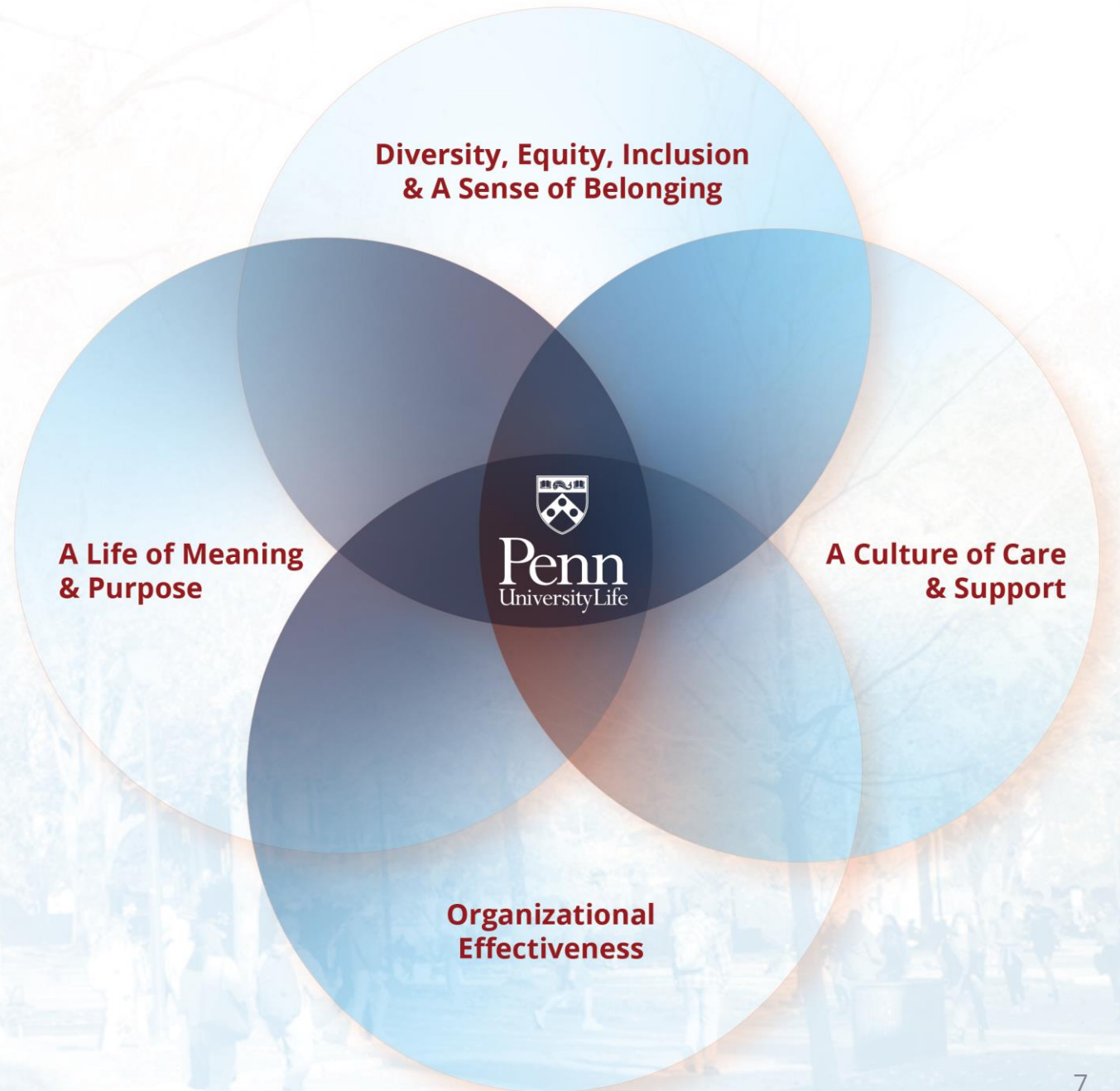
Student Employees
(~300 student tutors)

About University Life

University Life nurtures an inclusive campus environment where students grow intellectually, engage in meaningful experiential opportunities, and deepen intercultural and interpersonal understanding in preparation for a life of meaning and purpose.



University Life's Guiding Principles



University Life "Clusters"

University Life is organized into four, distinct clusters. Each cluster aligns with one of University Life's four Guiding Principles. As a collective division, the clusters are responsible for partnering to create an inclusive and engaging student experience and campus environment.



University Life Leadership Team



Hikaru (Karu) Kozuma
(he/him)
Vice Provost
for University Life



Tamara Greenfield King
(she/her)
Senior Associate Vice Provost
for Student Affairs



Sharon Smith
(she/her)
Associate Vice Provost
for University Life



Will Atkins
(he/him)
Associate Vice Provost for
Diversity, Equity, Inclusion &
Belonging



Laurie A. Hall
(she/her)
Assistant Vice Provost
for Strategic Planning &
Operations



Rob Butler
(he/him)
Interim University Life
Technology Services Director



Organizational Effectiveness

Vice Provost's Strategic Funding Initiatives

Diversity, Equity, Inclusion, & Belonging

- Cultural Heritage Months & Celebrations
- Inclusion Initiatives & Social Justice Education Training

Space & Place

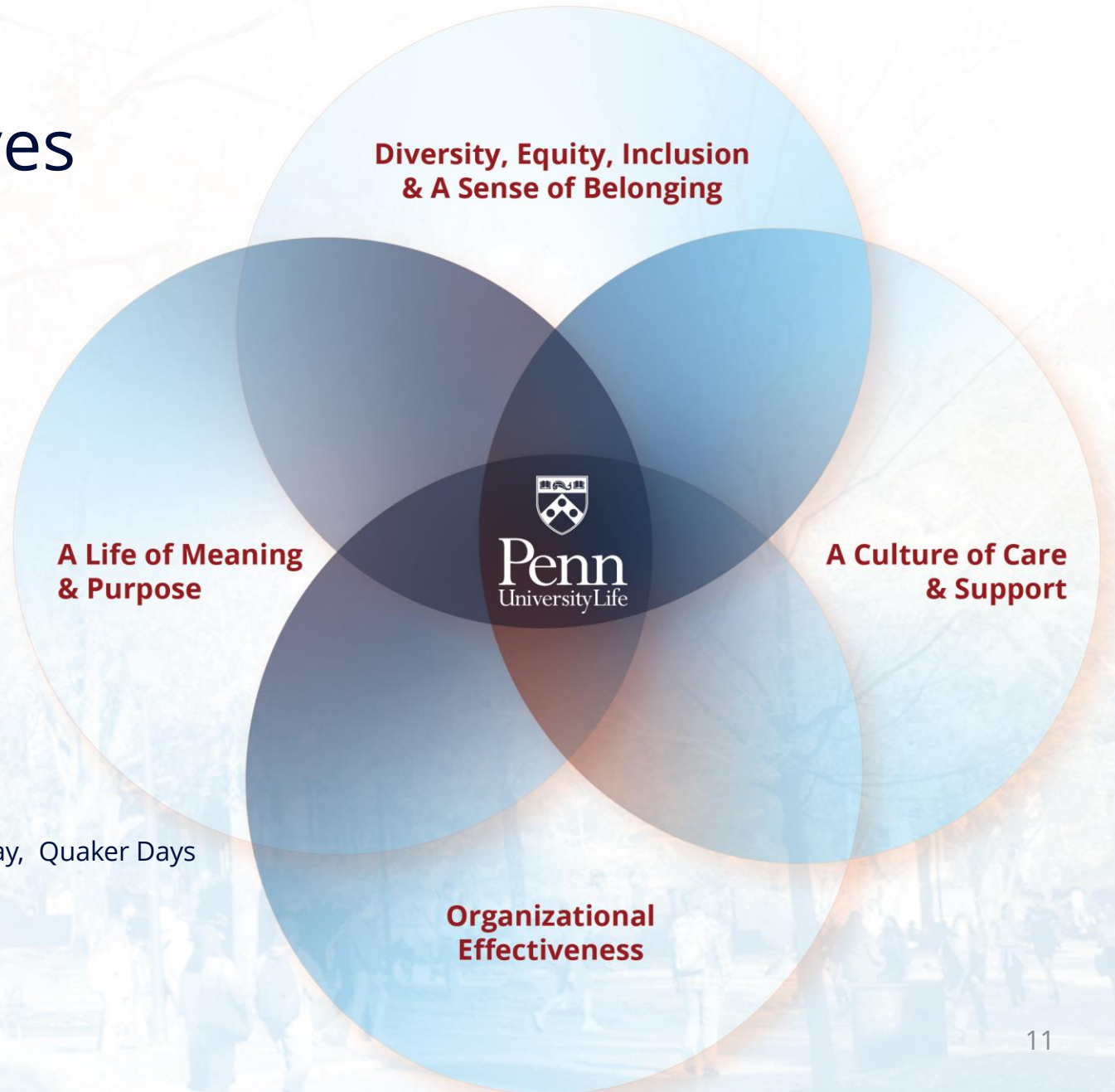
- Revitalization of Houston Hall
- University Life Murals & Strategic Branding

Emergency & Opportunity Fund

- Student Crisis and/or Financial Hardship

University Life General Fund

- Student and Staff Training, Development, & Conferences
- Campus-Wide Programming – First Day of Class, Highball to Heyday, Quaker Days



Thank you!

