



# University Life

---





# Land & Labor Acknowledgement

We recognize and acknowledge that the University of Pennsylvania stands on the Indigenous territory known as “Lenapehoking,” the traditional homelands of the Lenape, also called Lenni-Lenape or Delaware Indians.

These are the people who, during the 1680s, negotiated with William Penn to facilitate the founding of the colony of Pennsylvania. Their descendants today include the Delaware Tribe and Delaware Nation of Oklahoma; the Nanticoke Lenni-Lenape, Ramapough Lenape, and Powhatan Renape of New Jersey; and the Munsee Delaware of Ontario.

---

We recognize and acknowledge the labor upon which our country, state, and institution are built. We remember that our country was built on the labor of enslaved people who were kidnapped and brought to the US from the African continent and recognize the continued contribution of their survivors.

We also acknowledge all immigrant and indigenous labor, including voluntary, involuntary, trafficked, forced, and undocumented peoples who contributed to the building of the country and continue to serve within our labor force.

# University Life Departments

Creating the Student Experience Outside the Classroom



# University Life Organizational Chart





**175**

University Life  
Team Members

**681**

Student Employees  
(~300 student tutors)

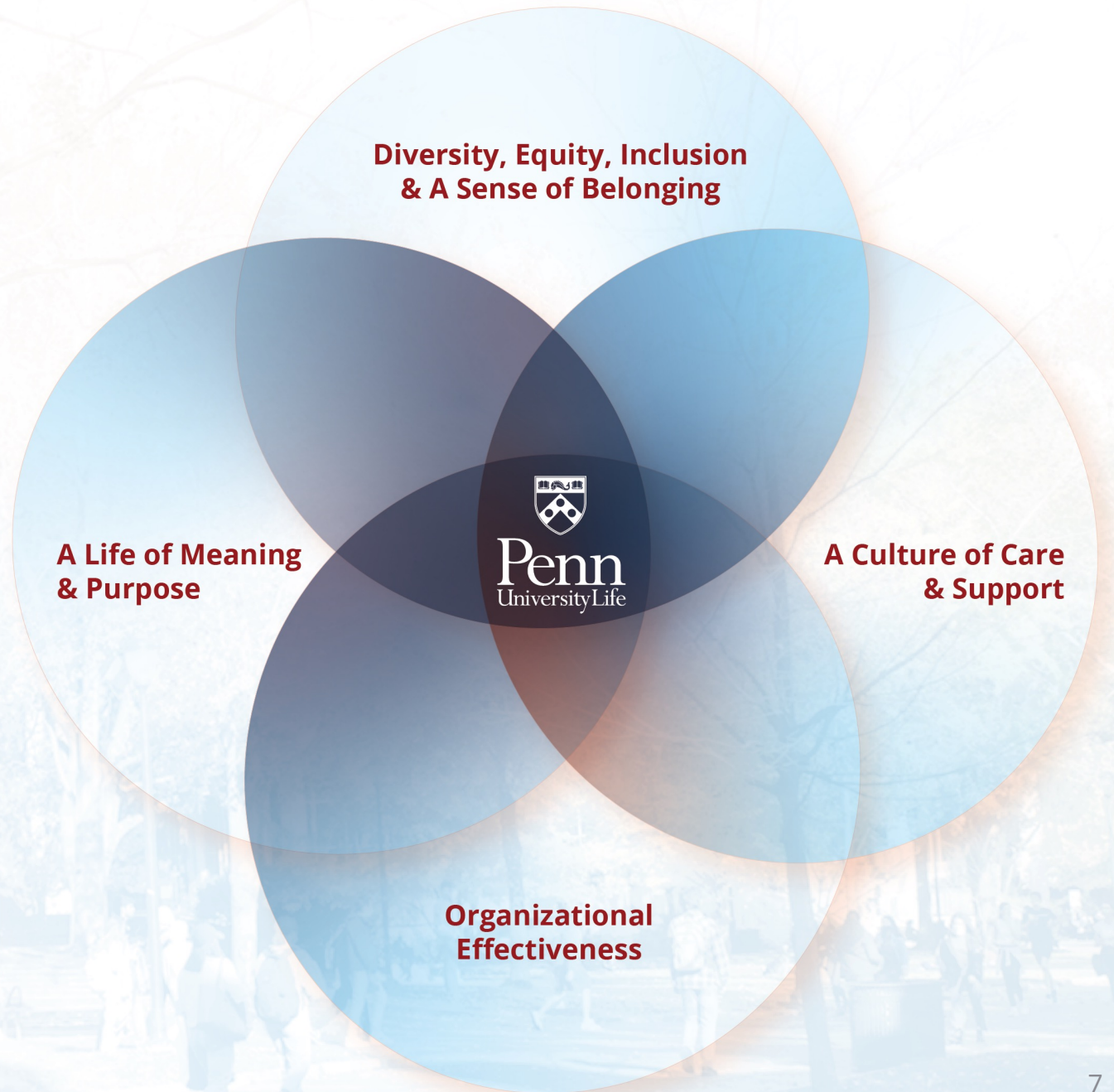
# About University Life

University Life nurtures an inclusive campus environment where students grow intellectually, engage in meaningful experiential opportunities, and deepen intercultural and interpersonal understanding in preparation for a life of meaning and purpose.

---



# University Life's Guiding Principles



# University Life "Clusters"

University Life is organized into four, distinct clusters. Each cluster aligns with one of University Life's four Guiding Principles. As a collective division, the clusters are responsible for partnering to create an inclusive and engaging student experience and campus environment.





# University Life Leadership Team



**Hikaru (Karu) Kozuma**  
*(he/him)*  
Vice Provost  
for University Life



**Tamara Greenfield King**  
*(she/her)*  
Senior Associate Vice Provost  
for Student Affairs



**Sharon Smith**  
*(she/her)*  
Associate Vice Provost  
for University Life



**Will Atkins**  
*(he/him)*  
Associate Vice Provost for  
Diversity, Equity, Inclusion &  
Belonging



**Laurie A. Hall**  
*(she/her)*  
Assistant Vice Provost  
for Strategic Planning &  
Operations



**Rob Butler**  
*(he/him)*  
Interim University Life  
Technology Services Director

# Engagement & Leadership



**Tamara Greenfield King, J.D.**  
*(she/her)*  
Senior Associate Vice Provost for Student Affairs



**Barbara Hewitt, Ed.D.**  
*(she/her)*  
Executive Director,  
Career Services



**Jessica Nicole Ryan**  
*(she/her)*  
Director, Leadership Community  
Fraternity and Sorority Life



**Jonathan Bell**  
*(he/him)*  
Director, Residential  
Community, Fraternity and  
Sorority Life



**Colonel Vincent J. Ciucoli**  
USMC  
*(he/him)*  
Director, Naval Reserve Officers  
Training Corps



**Katie Bonner**  
*(she/her)*  
Executive Director,  
Office of Student Affairs



**Laurie McCall**  
*(she/her)*  
Director, Platt Student  
Performing Arts House



# A Life of Meaning & Purpose



# Care & Support



**Sharon Smith**  
*(she/her)*  
Associate Vice Provost  
for University Life



**Elise Scioscia**  
*(she/her)*  
Director,  
Penn Violence Prevention



**Lauren Rudick**  
*(she/her)*  
Director,  
Student Intervention Services



**Jane Holahan, Ed.D.**  
*(she/her)*  
Executive Director,  
Weingarten Center



**Ryan Miller, Ed.D.**  
*(he/him)*  
Director, Academic Support  
Weingarten Center



**Aaron Spector**  
*(he/him)*  
Director, Disability Services  
Weingarten Center



**Valerie Wrenn**  
*(she/her)*  
Associate Director, Tutoring  
Services, Weingarten Center



# A Culture of Care & Support



# Diversity, Equity, Inclusion & Belonging



**Will Atkins, Ph.D.**  
*(he/him)*  
Associate Vice Provost for  
Diversity, Equity, Inclusion & Belonging



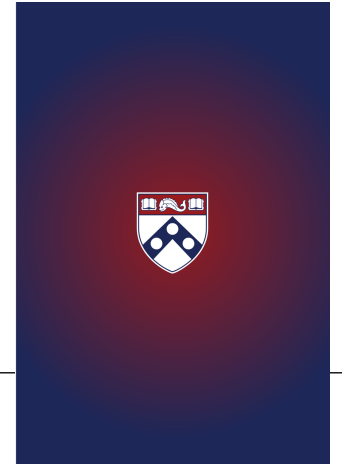
**Valerie De Cruz**  
*(she/her)*  
Director, Greenfield  
Intercultural Center



**Malik Muhammad**  
*(he/him)*  
Director, Inclusion Initiatives  
and Social Justice Education



**Krista Cortes, Ph.D.**  
*(she/they)*  
Director, La Casa Latina



**Vacant**  
Director, Lesbian Gay Bisexual  
Transgender Center



**Brian Peterson, Ph.D.**  
*(he/him)*  
Director, Makuu: The Black  
Cultural Center



**Elisa Foster**  
*(she/her)*  
Interim Director, Penn  
Women's Center



**Xiumei (Mei) Long**  
*(she/her)*  
Director, Pan-Asian American  
Community House



# Diversity, Equity, Inclusion & A Sense of Belonging



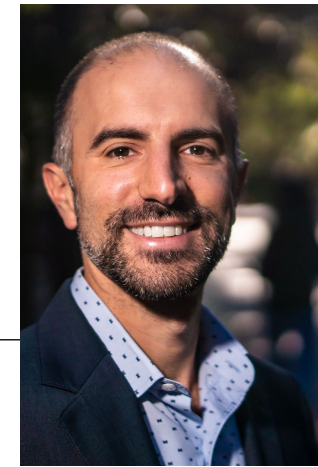
# Strategic Planning & Operations



**Laurie A. Hall**  
*(she/her)*  
Assistant Vice Provost for Strategic Planning  
and Operations



**Saleem M. Curry, MPM**  
*(he/him)*  
Director, Space and Events  
Management



**Michael Elias**  
*(he/him)*  
Executive Director  
Strategic Initiatives



**Marjan Osman Gartland**  
*(she/her)*  
Director  
Creative Strategy and Design



**Laurie McCaffrey**  
*(she/her)*  
Director, Strategic Partnerships  
& Programs





 Penn  
University Life  
UNIVERSITY OF PENNSYLVANIA

# Organizational Effectiveness

 PENN COMMISSION

# Vice Provost's Strategic Funding Initiatives

## Diversity, Equity, Inclusion, & Belonging

- Cultural Heritage Months & Celebrations
- Inclusion Initiatives & Social Justice Education Training

## Space & Place

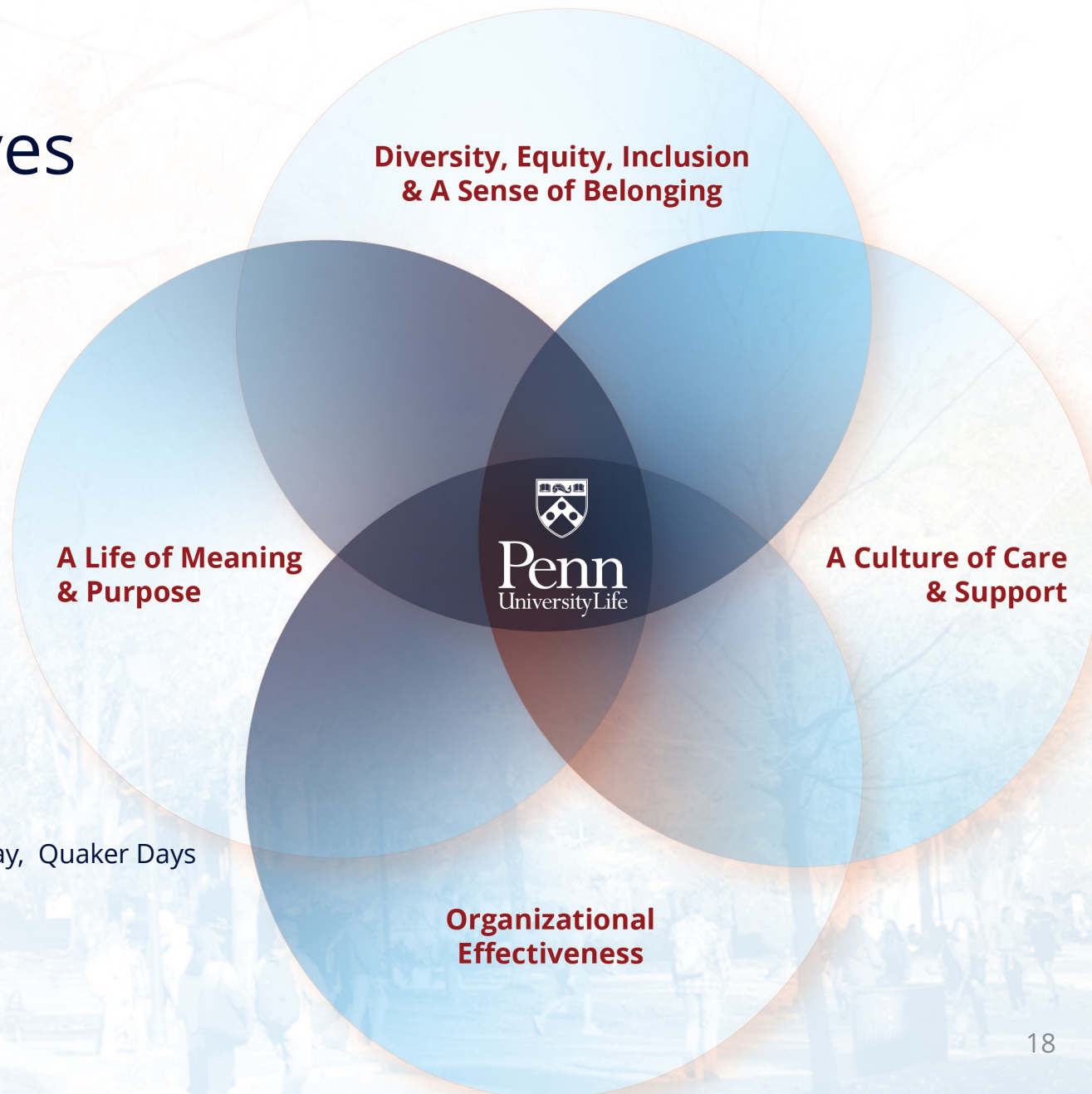
- Revitalization of Houston Hall
- University Life Murals & Strategic Branding

## Emergency & Opportunity Fund

- Student Crisis and/or Financial Hardship

## University Life General Fund

- Student and Staff Training, Development, & Conferences
- Campus-Wide Programming – First Day of Class, Highball to Heyday, Quaker Days



# Thank you!

---

